

RCM2100 pins are brought out to 2 headers with 0.1" pitch

8 output LEDs

Power input with switch

Coin battery

RCM2x00 Core Module

On board 2x16 LCD with headers for other types

Headers and DIP sockets for all IO ports

Headers allow any Rabbit serial port to be connected to any driver

RS-232 drivers allow any port to have full handshaking

Programming switch allows Port 1 to be used to program the Rabbit

Two DCE RS-232 serial drivers

Two DTE RS-232 serial drivers

Note: since the Rabbit 2000 has only 4 serial ports, only 4 of the 5 serial drivers can be used at a time.

+5V regulator

Adjustable regulator, used for +3V3 if dataflash installed

Headers and DIP sockets for buffered addr/data and LEDs

8 input switches

Multi-media connector for dataflash

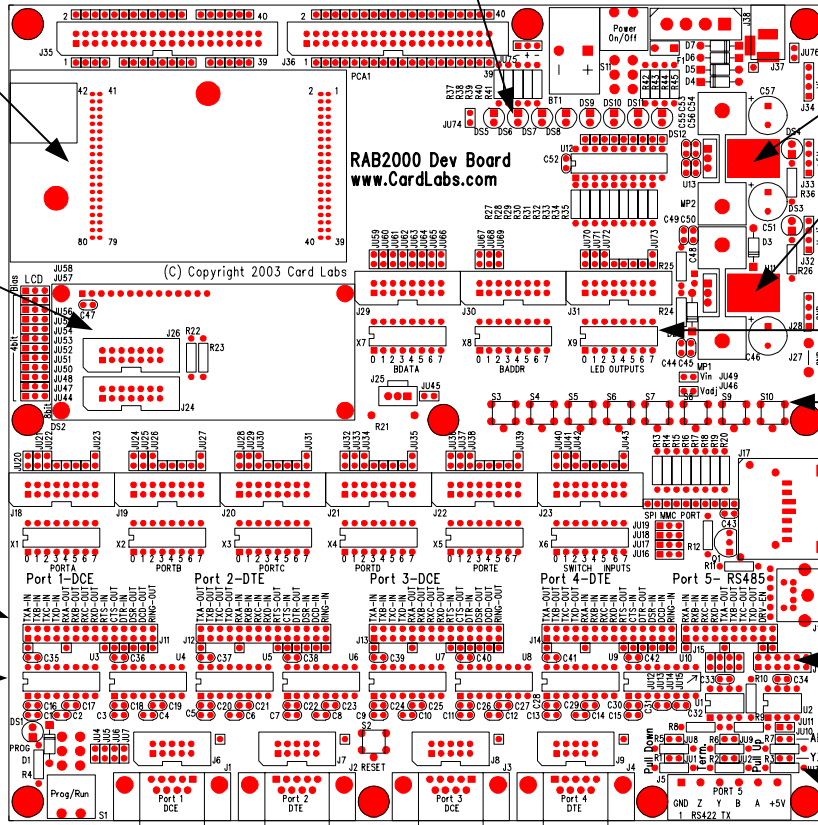
Mini-DIN connector

RS-485 Isolation header

Half or full duplex RS-485/422 driver

RS-485 port terminating resistors are jumper selectable

Removable terminal block with +5V and GND for RS-485



# RAB2000 Development Board Features

**Card Labs**  
 132 Harvest Park Way NE,  
 Calgary, Alberta, Canada  
 T3K 4K7

Tel: (403) 567-9328  
 Fax: (403) 567-9329  
 sales@cardlabs.com  
 www.cardlabs.com